

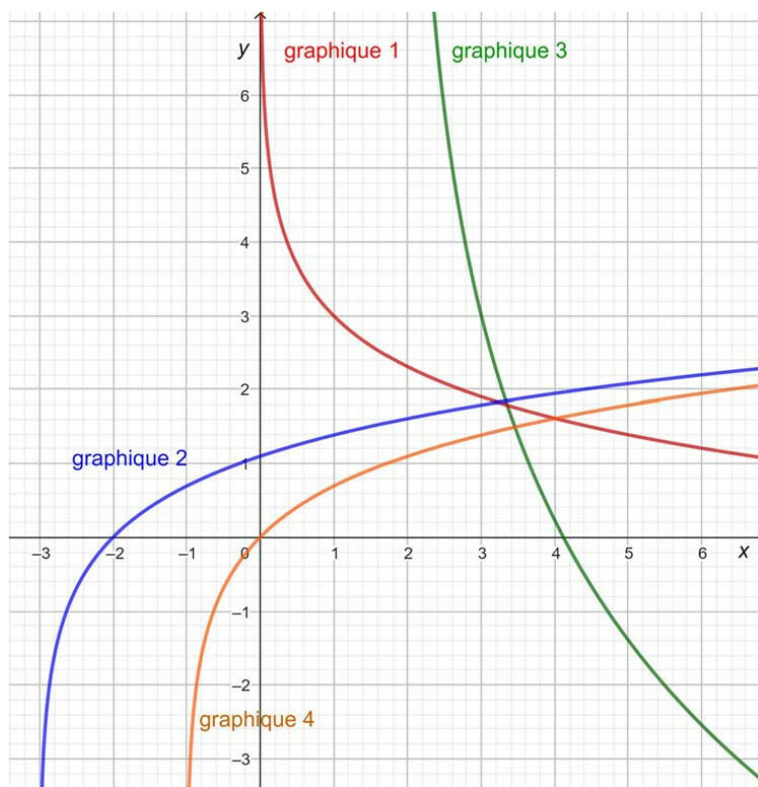
Exercise 1

Calc. : ✗

On donne trois fonctions logarithmiques f , g et h définies respectivement par

$$f(x) = 3 - 4 \ln(x - 2), \quad g(x) = 3 - \ln(x) \quad \text{et} \quad h(x) = \ln(x + 3)$$

ainsi que quatre graphiques de fonctions logarithmiques représentés ci-dessous.



Associer chacune des trois fonctions au graphique correspondant. **Justifier** la réponse.

5 marks

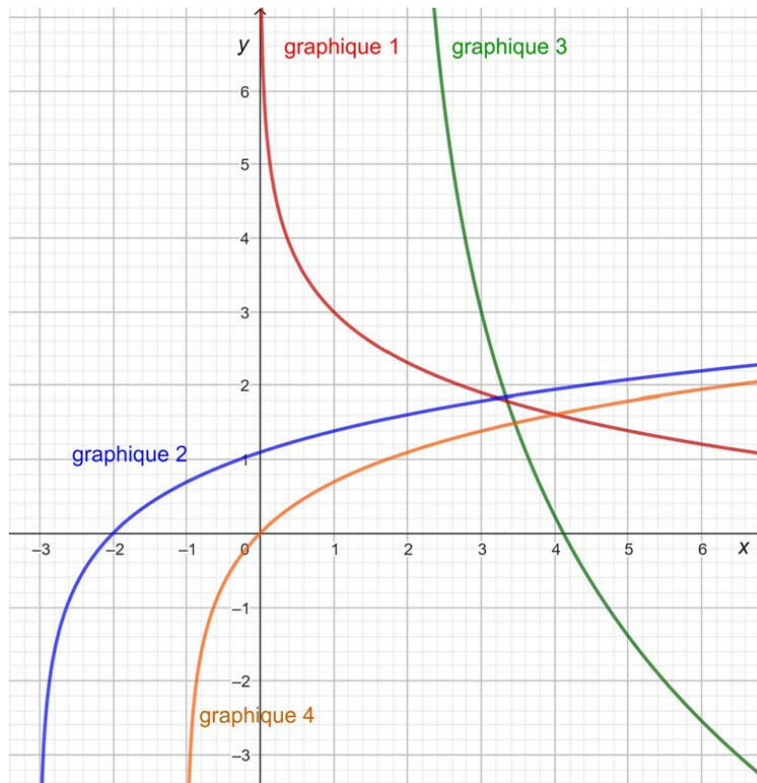
Exercise 2

Calc. : **X**

We give three logarithmic functions f , g and h defined respectively by

$$f(x) = 3 - 4 \ln(x - 2), \quad g(x) = 3 - \ln(x) \quad \text{et} \quad h(x) = \ln(x + 3)$$

as well as four graphs of logarithmic functions depicted below.



Associate each of the three functions with the corresponding graph. **Justify** the answer.

5 marks