

Exercise 1

Calc. : ✗

1. Associer chaque fonction (de f à h) à son graphique (de i à iii) :

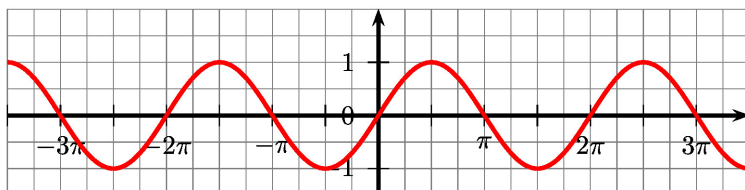
3 marks

$f(x) = \sin(x)$

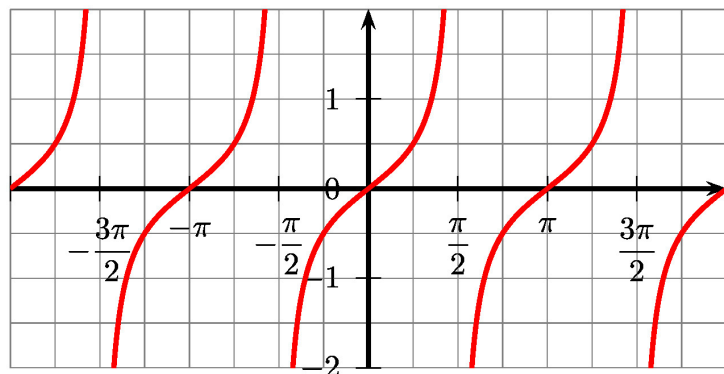
$g(x) = \cos(x)$

$h(x) = \tan(x)$

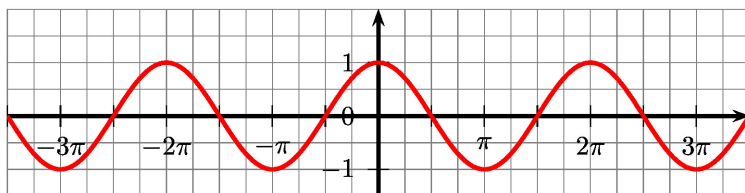
i)



ii)



iii)



2. Donner la période des fonctions i) et ii).

2 marks

Exercise 2

Calc. : ✗

1. Ordne jeder Funktion (von f bis h) ihren Graphen (von i bis iii) zu:

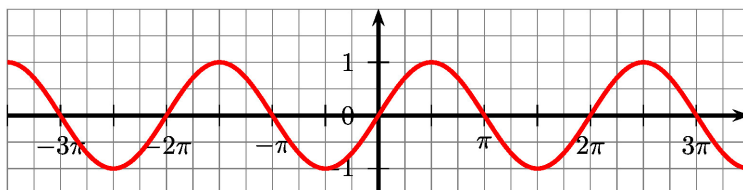
3 marks

$f(x) = \sin(x)$

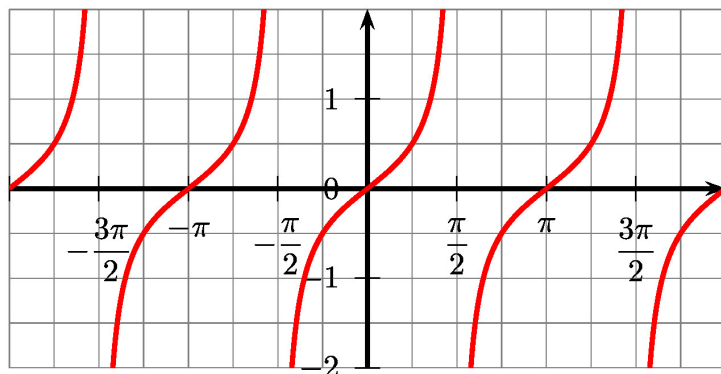
$g(x) = \cos(x)$

$h(x) = \tan(x)$

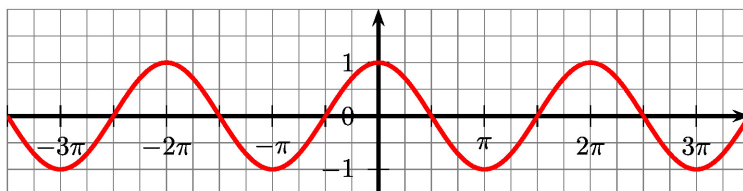
i)



ii)



iii)



2. Gib die Perioden der Funktionen i) und ii) an.

2 marks

Exercise 3

Calc. : ✖

1. Associate each function (from f to h) to the graph (from i to iii):

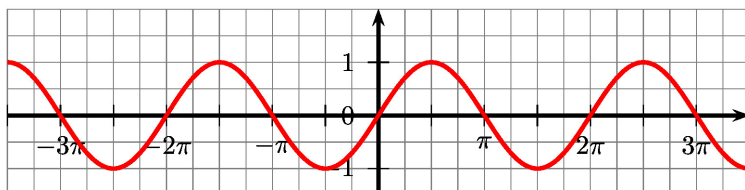
3 marks

$f(x) = \sin(x)$

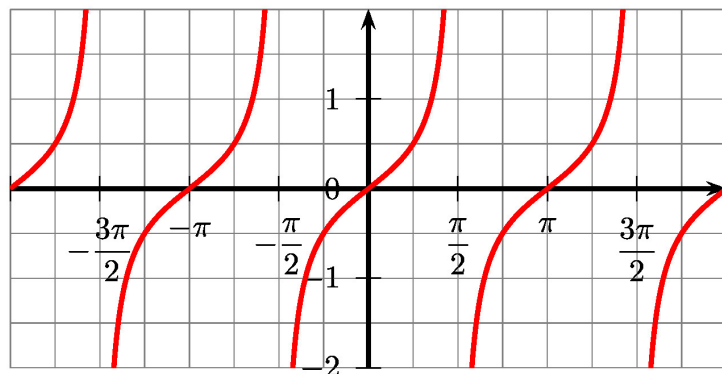
$g(x) = \cos(x)$

$h(x) = \tan(x)$

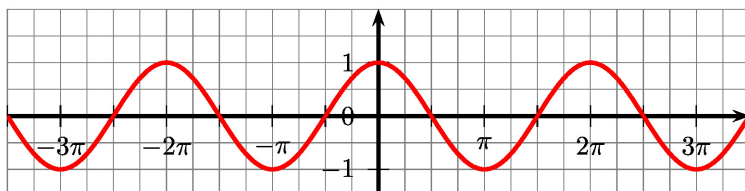
i)



ii)



iii)



2. Give the period of the functions i) and ii).

2 marks