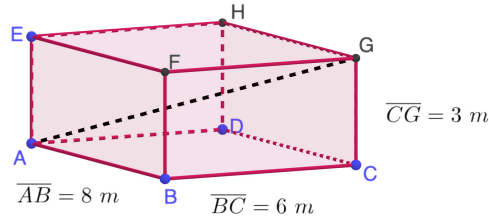


Exercise 1

Calc. : ✓

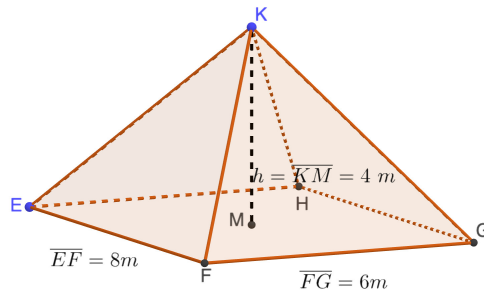
1. Calcular la longitud del segmento \overline{AG} de la siguiente figura:

2 marks



2. Calcular la longitud de la arista \overline{KG} :

2 marks

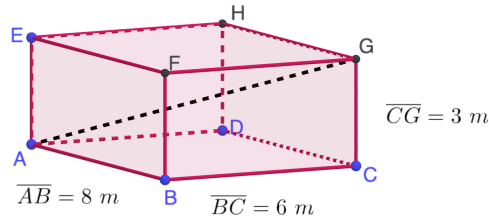


Exercise 2

Calc. : ✓

1. Calculez la longueur du segment $[AG]$ dans la figure suivante :

2 marks



2. Calculez la longueur de l'arête $[KG]$:

2 marks

